

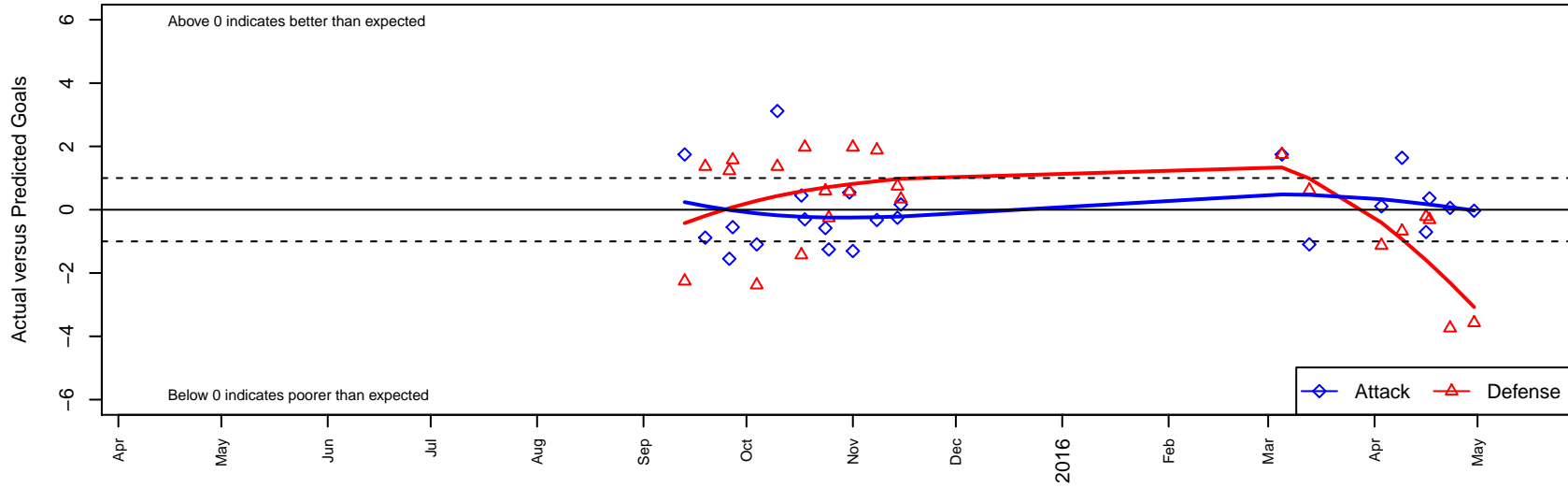
# NEU Noreaster Blue G02

Northeast United  
 Portland, OR  
 G02 total strength=653  
 attack=0.82 defense=0.44  
 fall league = PTT G02 Div 1 White  
 spr league = Spr OYS G02 Div 1 Blue

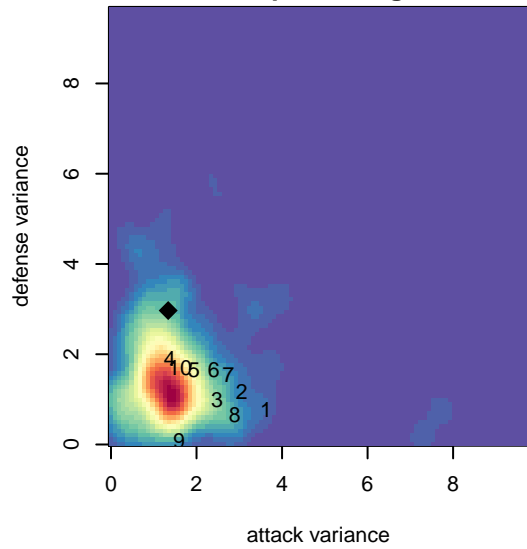
alt names used:  
 NEU PDX G02 Blue  
 NEU PDX G02 Blue  
 NEU PDX G02 Blue

Venues played:  
 2015 PTT G02 Division 1 White  
 2015 OYS Presidents Cup G02  
 2015 Spr OYS G02 Division 1 Blue

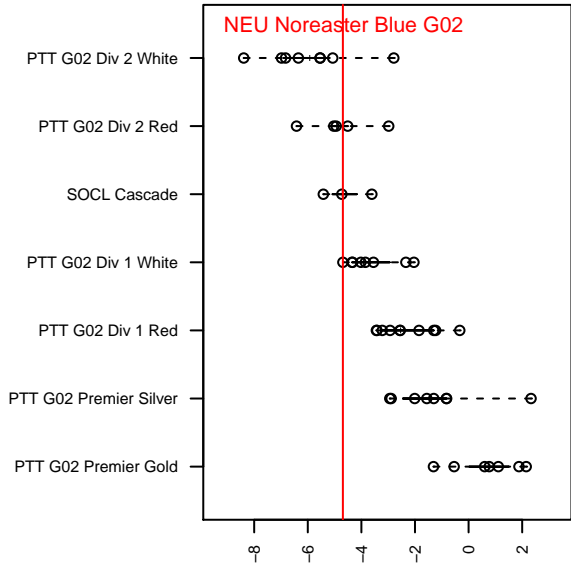
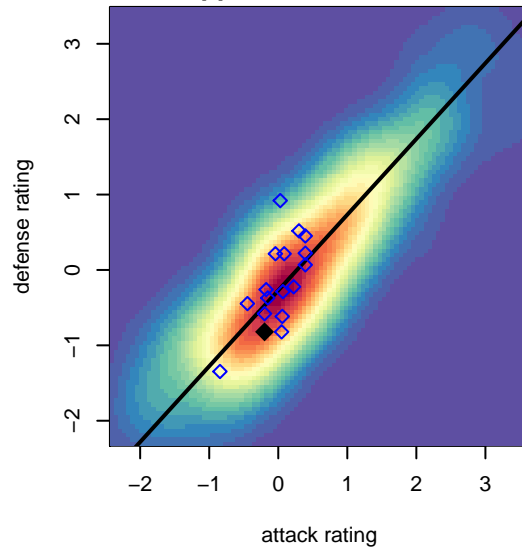
**NEU Noreaster Blue G02**  
 Dots are actual minus expected GF (blue circles) and GA (red triangles).  
 Blue line is smoothed change in attack strength. Red is smoothed change in defense strength.



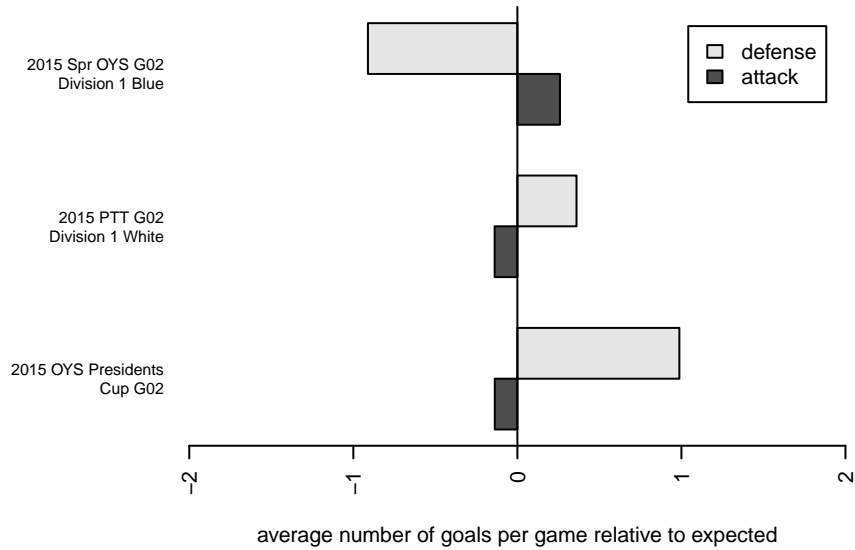
**attack and defense variance (black dot)  
relative to other teams  
and top 10 in region**



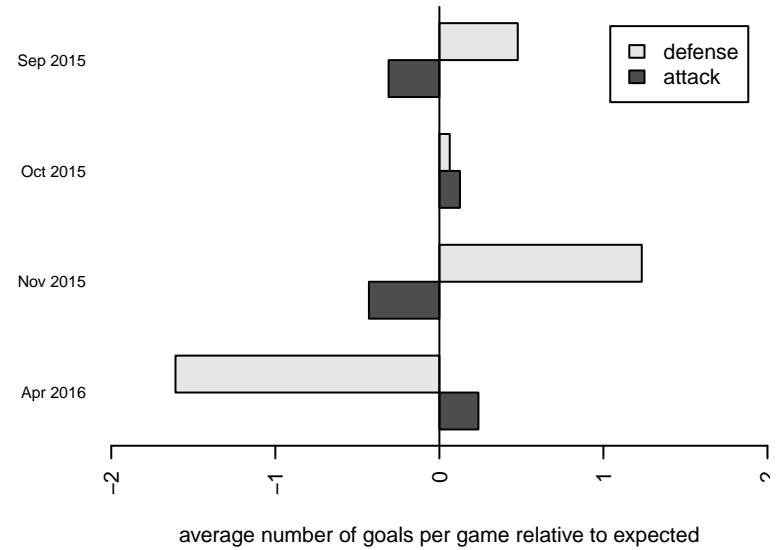
**attack and defense rating  
relative to others at age  
and all opponents in last 13 months**



**Performance relative to 13 month average**



**Performance relative to 13 month average**



| date       | home                                |   | away                                |   | venue                            | pred.home | pred.away |
|------------|-------------------------------------|---|-------------------------------------|---|----------------------------------|-----------|-----------|
| 2016-04-30 | NEU Noreaster Blue G02              | 1 | Washington Timbers Burgundy G02     | 5 | 2015 Spr OYS G02 Division 1 Blue | 1.03      | 1.43      |
| 2016-04-23 | Washington Timbers Screammers G02   | 6 | NEU Noreaster Blue G02              | 1 | 2015 Spr OYS G02 Division 1 Blue | 2.26      | 0.94      |
| 2016-04-17 | THUSC Rapids G02                    | 2 | NEU Noreaster Blue G02              | 1 | 2015 Spr OYS G02 Division 1 Blue | 1.68      | 0.64      |
| 2016-04-16 | THUSC Obsidian G02                  | 2 | NEU Noreaster Blue G02              | 0 | 2015 Spr OYS G02 Division 1 Blue | 1.78      | 0.70      |
| 2016-04-09 | NEU Noreaster Blue G02              | 3 | Thelo Thunder G02                   | 2 | 2015 Spr OYS G02 Division 1 Blue | 1.36      | 1.32      |
| 2016-04-03 | NEU Noreaster Blue G02              | 3 | NSC Bolt G02                        | 2 | 2015 Spr OYS G02 Division 1 Blue | 2.89      | 0.87      |
| 2016-03-13 | NEU Noreaster Blue G02              | 0 | Bend FC Timbers White G02           | 1 | 2015 Spr OYS G02 Division 1 Blue | 1.10      | 1.62      |
| 2016-03-05 | BSC Portland Vapor G02              | 0 | NEU Noreaster Blue G02              | 3 | 2015 Spr OYS G02 Division 1 Blue | 1.74      | 1.25      |
| 2015-11-15 | PCU Red G02                         | 2 | NEU Noreaster Blue G02              | 1 | 2015 OYS Presidents Cup G02      | 2.34      | 0.83      |
| 2015-11-14 | BSC Portland Vapor G02              | 1 | NEU Noreaster Blue G02              | 1 | 2015 OYS Presidents Cup G02      | 1.74      | 1.25      |
| 2015-11-08 | NEU Noreaster Blue G02              | 0 | THUSC Sapphire G02                  | 0 | 2015 OYS Presidents Cup G02      | 0.32      | 1.88      |
| 2015-11-01 | Crossfire OR WUSC Atletico Navy G02 | 0 | NEU Noreaster Blue G02              | 0 | 2015 PTT G02 Division 1 White    | 1.97      | 1.30      |
| 2015-10-31 | NEU Noreaster Blue G02              | 1 | Crossfire OR LOSC Impact G02        | 2 | 2015 PTT G02 Division 1 White    | 0.46      | 2.58      |
| 2015-10-25 | NEU Noreaster Blue G02              | 0 | BSC Portland Vapor G02              | 2 | 2015 PTT G02 Division 1 White    | 1.25      | 1.74      |
| 2015-10-24 | Washington Timbers Forest G02       | 2 | NEU Noreaster Blue G02              | 0 | 2015 PTT G02 Division 1 White    | 2.59      | 0.58      |
| 2015-10-18 | NEU Noreaster Blue G02              | 1 | Crossfire OR WUSC Atletico Navy G02 | 0 | 2015 PTT G02 Division 1 White    | 1.30      | 1.97      |
| 2015-10-17 | NEU Noreaster Blue G02              | 1 | FC Portland White G02               | 4 | 2015 PTT G02 Division 1 White    | 0.55      | 2.57      |
| 2015-10-10 | NEU Noreaster Blue G02              | 4 | Crossfire OR CUSC Red G02           | 0 | 2015 PTT G02 Division 1 White    | 0.88      | 1.36      |
| 2015-10-04 | Bend FC Timbers White G02           | 4 | NEU Noreaster Blue G02              | 0 | 2015 PTT G02 Division 1 White    | 1.62      | 1.10      |
| 2015-09-27 | FC Portland White G02               | 1 | NEU Noreaster Blue G02              | 0 | 2015 PTT G02 Division 1 White    | 2.57      | 0.55      |
| 2015-09-26 | NEU Noreaster Blue G02              | 0 | FC Columbia County G02              | 1 | 2015 PTT G02 Division 1 White    | 1.55      | 2.23      |
| 2015-09-19 | Crossfire OR CUSC Red G02           | 0 | NEU Noreaster Blue G02              | 0 | 2015 PTT G02 Division 1 White    | 1.36      | 0.88      |
| 2015-09-13 | BSC Portland Vapor G02              | 4 | NEU Noreaster Blue G02              | 3 | 2015 PTT G02 Division 1 White    | 1.74      | 1.25      |